

984

微差壓傳送器

-1.5~2500mbar



特性

- * 984系列差壓傳送器用於偵測差壓、正壓及真空
- * 二段式偵測範圍可由Jump調整
- * 傳送器可選擇包含或不包含現場顯示控制器
- * Offset及Span可調整
- * 反應時間0.1-1S可由Jump調整

應用範圍

- * 冷凍空調系統
- * 工業用通風設備
- * 監控氣體濾器及通風機
- * 負壓隔離病房
- * 氣體流量監控
- * 空氣壓力監控
- * 機械及系統工程
- * 環境工程

技術資料

壓力範圍

-1.5~2500 mbar
(參考訂購編號表)

爆裂壓力

20bar (參考原廠技術手冊)

精確度

±1% FS

覆歸精度

±0.2% of FS

操作溫度

-10 ~ +70°C

反應時間

0.1-1S (Jump調整)

感應元件

薄膜式

顯示器

高亮度LED顯示，3 1/2位
(option)

輸出訊號/ 電源供應

*0~10V, 3 wire,
8~30VDC/24VAC,
switching output
4~20mA, 2 wire,
15~30VDC (no display
possible)
*4~20mA, 3 wire,
18~30VDC/24VAC,
switching output

保護級數

沒有覆蓋IP 00
有覆蓋IP 54

Offset及Span可調整

0~10V ≤ ±50mV, ±20%
4~20mA ≤ ±80 μA ±20%

開關輸出

Open-collector, NPN, SPST,
100mA max. ≤ 35 VDC ,
可調整

標準/ 符合

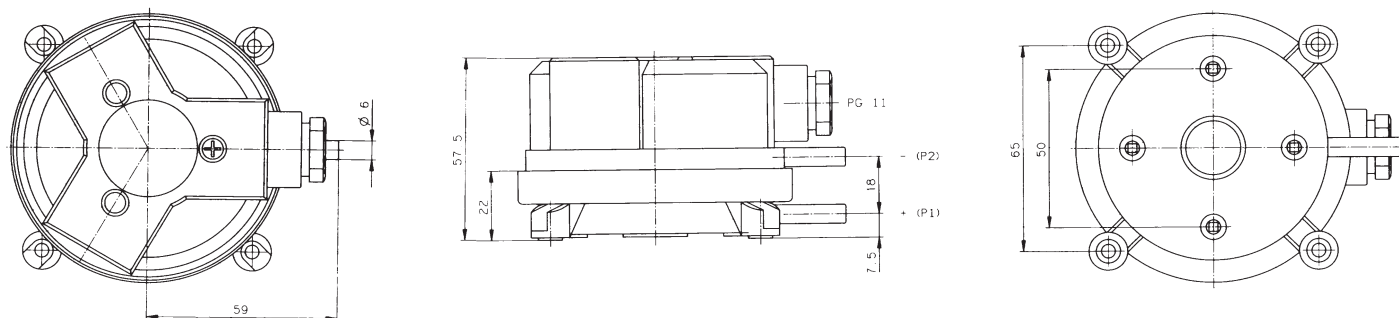
IEC 770, EN50081-1,
EN50082-1, EN61000-6-2

訂購編號

984.3 - - - -

測量範圍	-50 to 50 Pascal (-0.5 to 0.5 mbar)	X
	-100 to 100 Pascal (-1.0 to 1.0 mbar)	W
	-150 to 150 Pascal (-1.5 to 1.5 mbar)	x
	0 ... 100Pa (1.0mbar) 0 ... 250Pa (2.5mbar)	2
	0 ... 250Pa (2.5mbar) 0 ... 500Pa (5.0mbar)	3
	0 ... 500Pa (5.0mbar) 0 ... 1,000Pa (10mbar)	4
	0 ... 1kPa (10mbar) 0 ... 2.5kPa (25mbar)	5
	0 ... 5kPa (50mbar) 0 ... 10kPa (100mbar)	7
	0 ... 25kPa (1.0mbar) 0 ... 50kPa (500mbar)	9
	0 ... 100kPa (1.0mbar) 0 ... 250kPa (2500mbar)	B
壓力單位	Pascal	3
輸出信號/ 供應電壓	0 ... 10 Volt, 3-wire, 24VAC / VDC, with switching output	1
	4 ... 20 mA, 2-wire, 24VDC, with switching output	2
	4 ... 20 mA, 3-wire, 24VAC / VDC, with switching output	3
	0 ... 10 Volt, 3-wire, 24VAC / VDC, with switching output	7
	4 ... 20 mA, 3-wire, 24VAC / VDC, with switching output	D
顯示	none	0
	with LED-Display, 3.5 digits	1
電力連接	screw terminal block	4

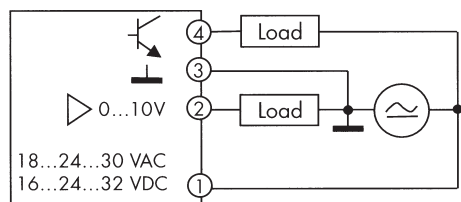
外觀尺寸圖



接線圖

Connection assignment
984.3x3104 and ...704

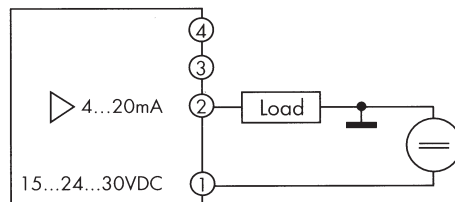
Pressure Transmitter



4	Switching output, npn
3	(GO) GND
2	(Y) Out 0 ... 10 V
1	(G) In 24 VAC / VDC

984.3x3204

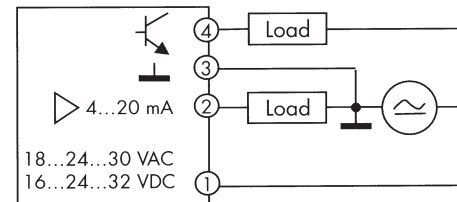
Pressure Transmitter



4	NC	do not use
3	NC	do not use
2	(Y)	Out 4 ... 20 mA
1	(G)	In 24 VDC

984.3x3304 and ...D04

Pressure Transmitter



4	Switching output, npn
3	(GO) GND
2	(Y) Out 4 ... 20 mA
1	(G) In 24 VAC / VDC